

Homeostasis in mammals

Question Paper 2

Level	International A Level
Subject	Biology
Exam Board	CIE
Topic	Homeostasis
Sub Topic	Homeostasis in mammals
Booklet	Theory
Paper Type	Question Paper 2

Time Allowed : 64 minutes

Score : / 53

Percentage : /100

Grade Boundaries:

A*	A	B	C	D	E	U
>85%	'77.5%	70%	62.5%	57.5%	45%	<45%

Save My Exams! – The Home of Revision

For more awesome GCSE and A level resources, visit us at www.savemyexams.co.uk/

A series of horizontal dotted lines for writing.

Save My Exams! – The Home of Revision

For more awesome GCSE and A level resources, visit us at www.savemyexams.co.uk/

A series of horizontal dotted lines for writing.

4 Fig. 2.1 is a light micrograph of a small part of the pancreas.

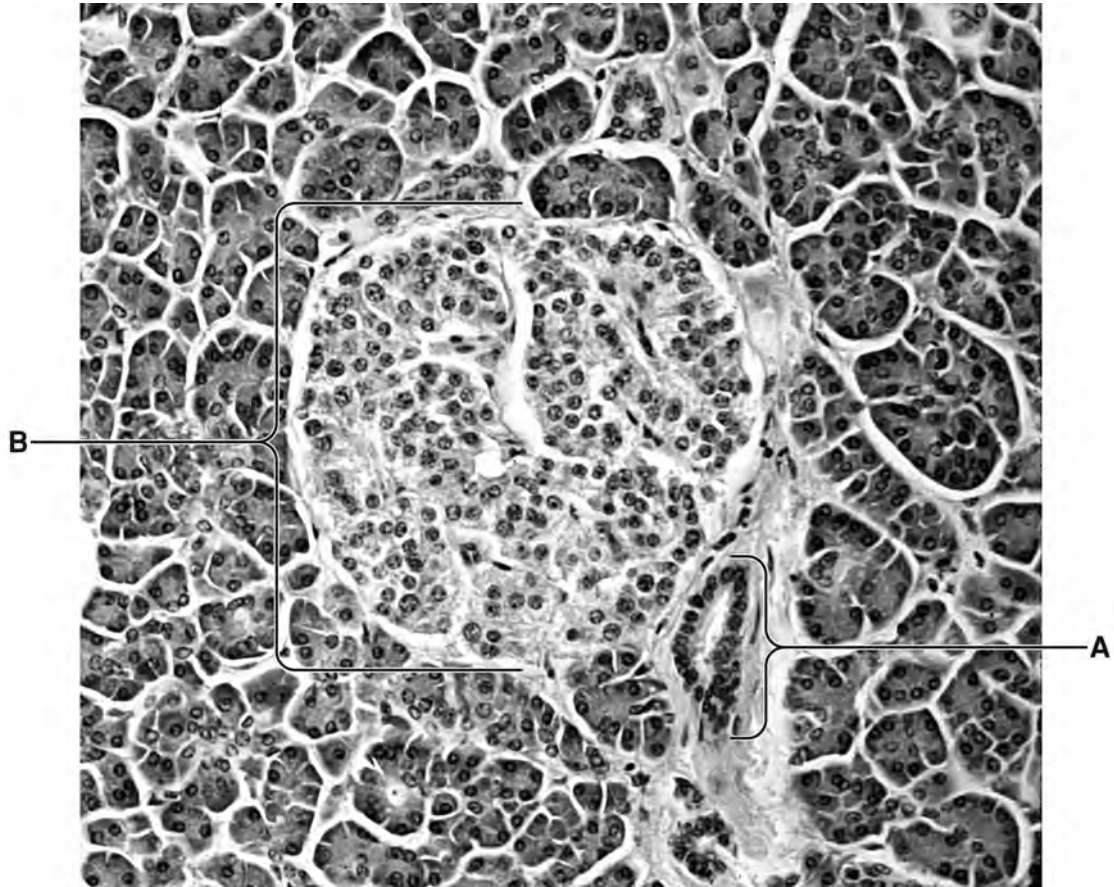


Fig. 2.1

(a) Name structures **A** and **B**.

A

B [2]

(b) With reference to Fig. 2.1, explain why the pancreas is an *endocrine gland*.

.....

.....

..... [2]

- (c) Insulin and glucagon are involved in the control of blood glucose concentration. When blood glucose concentration rises, secretion of insulin increases.

Outline two ways in which insulin affects the activity of cells in the liver.

1.
.....
2.
..... [2]

- (d) Some forms of diabetes are caused by an inability to secrete insulin and can be controlled by regular injections of insulin. Most of this insulin is now produced using genetically modified *Escherichia coli*.

Explain the advantages of using this type of insulin, rather than insulin obtained from animal sources.

-
.....
.....
..... [2]

[Total: 8]