

# Cell signalling

## Question Paper

Level	Pre U
Subject	Biology
Exam Board	Cambridge International Examinations
Topic	Animal physiology
Sub Topic	Cell signalling
Booklet	Question Paper

**Time Allowed:** 14 minutes

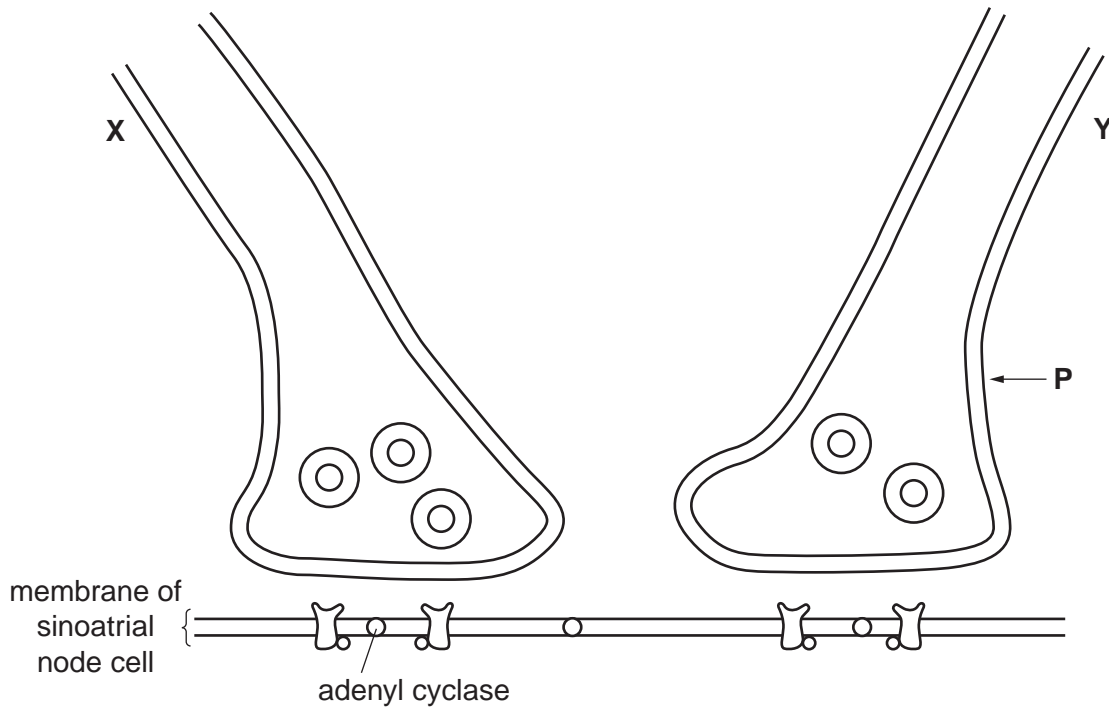
**Score:** /11

**Percentage:** /100



(c) Fig. 6.2 shows endings of neurones **X** and **Y** in the heart.

Stimulation of **Y** leads to an increase in the concentration of the second messenger, cyclic AMP (cAMP), in the cytoplasm of the heart cell and the stimulation of **X** leads to a decrease.



**Fig. 6.2**

Describe the events that follow the arrival of an impulse at **P** on neurone **Y** that leads to an increase in cAMP.

.....

.....

.....

.....

.....

.....

.....

.....

.....

.....

.....

..... [4]